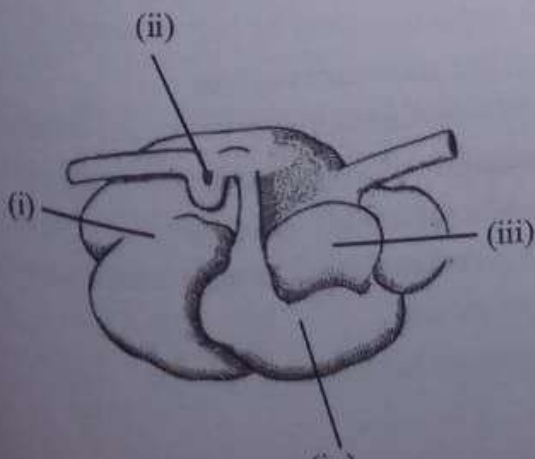


## Multiple Choice Questions

**DIRECTIONS :** The following questions has four choices (a), (b), (c) and (d) out of which only one is correct. You have to choose the correct alternative.

- Which statement is correct?  
[2013, Critical Thinking]
  - Breakdown of complex substance into simpler substance is called peristalsis.
  - The process of passing of digestive food into blood vessels in the Intestine is called peristalsis.
  - Movement of food through alimentary canal by the wave like movement controlled by involuntary muscles is called Peristalsis.
  - The process of utilisation of glucose, amino acid is called peristalsis.
- Which is NOT true for villi?
  - These increases the surface area for absorption of digested food.
  - These are small finger like projections.
  - Villi protects the inner lining of stomach
  - They absorb digested food materials.
- Is this statement correct or incorrect "Extracellular digestion takes place in small Intestine."  
[2014, Critical Thinking]
  - Large Intestine
  - Small Intestine
  - Stomach
  - None of these
- The other name of defaecation is \_\_\_\_\_.
  - Assimilation
  - Absorption
  - Egestion
  - Ingestion
- The given figure shows digestive system of ruminant. Which of the following is the correct labelling.



- (i) small intestine (ii) Rumen  
(iii) Abomasum (iv) omasum
  - (i) Rumen (ii) Small Intestine  
(iii) Small Intestine (iv) Abomasum
  - (i) Rumen (ii) Omasum  
(iii) Small Intestine (iv) Abomasum
  - (i) Abomasum (ii) Omasum  
(iii) Rumen (iv) small intestine
- The canine of our teeth helps in \_\_\_\_\_.
    - tearing the food
    - grinding the food
    - biting the food
    - cutting the food
  - Which is the largest chamber in the stomach of ruminant?
    - Omasum
    - Rumen
    - Abomasum
    - Reticulum.
  - The inner lining of stomach secretes
    - mucous
    - hydrochloric acid
    - digestive juices
    - all of these
  - What is the function of mucous secreted by the inner lining of stomach?
    - Kills many bacteria
    - Makes medium in stomach acidic
    - Protects lining of stomach
    - All the above
  - The function of the acid secreted by inner lining of stomach is
    - kills many bacteria
    - makes the medium in the stomach acidic
    - helps the digestive juices to act
    - all the above
  - Which one is incorrect about liver?
    - It stores proteins and fats
    - It purifies blood
    - It removes and stores iron from dead red blood cells
    - It helps in digestion by producing bile

12. Select the one who first discovered one-celled animals [2015, Critical Thinking]
- Charaka
  - Anton Leeuwenhoek
  - Marcello Malpighi
  - Galen
13. As the population of small fish in a lake decreases, the population of large fish that depend on the small fish for food will [2016, Critical Thinking]
- reproduce faster
  - begin to produce their own food
  - decrease in number
  - increase in number
14. The main function of the human digestive system is to
- break down foods for absorption into the blood
  - exchange oxygen and carbon dioxide in the lungs
  - release energy from sugars within the cells
  - carry nutrients to all parts of the body
15. Carbohydrate and its digestion begins in buccal cavity. It is [Tricky]
- cellulose
  - starch
  - proteins
  - vitamins
16. It is a large cream coloured gland and is located just below the stomach. It is [2017]
- liver
  - pancreas
  - heart
  - none of these
17. In grass-eating animals, the grass is stored in a part of the stomach where the food gets converted into cud. This part is called
- stomach
  - rumen
  - rumination
  - ruminant
18. It is secreted by salivary glands and its function is to break down starch into sugars. It is
- pancreatic juice
  - bile juice
  - saliva
  - none of these
19. Ingestion is
- the mode of chewing and cutting food in mouth.
  - the process of taking food into the body.
  - both the above are correct.
  - none of these is correct.
20. Tongue
- is a fleshy muscular organ and is attached at the back to the floor of buccal cavity.
  - mixes saliva with food during chewing and helps in swallowing food.
  - helps us to taste food.
  - all the above are correct.
21. Absorption
- is the process by which digested food passes into the blood vessels.
  - is the process by which digested food passes into the blood vessels in the wall of the intestines.
  - both the above are correct.
  - none of the above is correct
22. Assimilation is
- the process of change of digested absorbed substances into complex substances and its use.
  - utilization by living organisms of absorbed food materials in the process of growth, reproduction and repair.
  - both the above are correct.
  - none of the above is correct
23. Egestion is
- the storage of undigested and waste material in rectum
  - removal of faecal material through anus from time to time
  - both the above are correct
  - none of the above is correct
24. We vomit out food, because
- it is not to our taste
  - it is poisonous and should not be allowed to enter our body
  - it is not accepted by our stomach
  - all the above are correct
25. From where does saliva come in our mouth?
- when we see some food of our liking
  - when we are quite hungry
  - it is secreted by salivary glands situated in our mouth
  - none of the above is correct

## Match the Column

**DIRECTIONS :** Match column I with column II and select the correct answers using the code given below the columns

## 26. Column-I

- (A) Incisors  
 (B) Canines  
 (C) Premolars  
 (D) Molars  
 (a) A → p; B → s; C → q; D → r  
 (c) A → r; B → s; C → q; D → p

## Column-II

- (p) Grinding teeth  
 (q) Cracking teeth  
 (r) Cutting teeth  
 (s) Tearing teeth  
 (b) A → q; B → p; C → s; D → r  
 (d) A → r; B → q; C → s; D → p

## 27. Column-I

- (A) Salivary glands  
 (B) Liver  
 (C) Small intestine  
 (D) Stomach  
 (a) A → r; B → s; C → q; D → p  
 (c) A → s; B → r; C → q; D → p

## Column-II

- (p) pepsin  
 (q) trypsin  
 (r) amylase  
 (s) Bile  
 (b) A → r; B → q; C → p; D → s  
 (d) A → q; B → p; C → s; D → r

## 28. Column-I

- (A) Unicellular  
 (B) Blood sucking  
 (C) Racoon  
 (D) Pseudopodia  
 (a) A → s; B → r; C → p; D → q  
 (c) A → q; B → p; C → s; D → r

## Column-II

- (p) omnivore  
 (q) locomotion  
 (r) amoeba  
 (s) leech  
 (b) A → r; B → s; C → p; D → q  
 (d) A → r; B → p; C → q; D → s

## Statement Based Questions

**DIRECTIONS :** Read the following two statements carefully and choose the correct options.

- (a) Statements (1) and (3) are incorrect but (2) is correct.  
 (b) Statements (1) and (2) are incorrect but (3) is correct.  
 (c) All statements are correct.  
 (d) All statements are incorrect.

29. **Statement 1:** Permanent teeth lasts throughout life

**Statement 2:** It is the first set of teeth.

**Statement 3:** There are 32 milk teeth

30. **Statement 1:** At one end stomach receives food from food pipe

**Statement 2:** At one end stomach opens into small intestine.

**Statement 3:** Stomach wall releases HCl acid.

31. **Statement 1:** Length of large intestine is larger than small intestine.

**Statement 2:** Pancreas is the largest gland in human body.

**Statement 3:** Gall Bladder secretes juice into small intestine

32. **Statement 1:** The mode of taking in food into the body varies for different organisms.

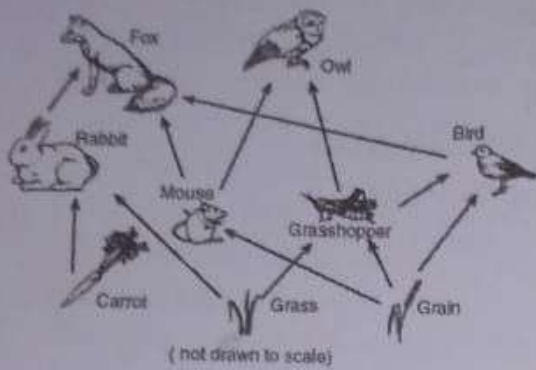
**Statement 2:** Complex components of food cannot be digested as such.

**Statement 3:** Digestion of food begins in the mouth.

**Figure Based Questions**

**DIRECTIONS :** Carefully observe pictures given below and answer the following questions.

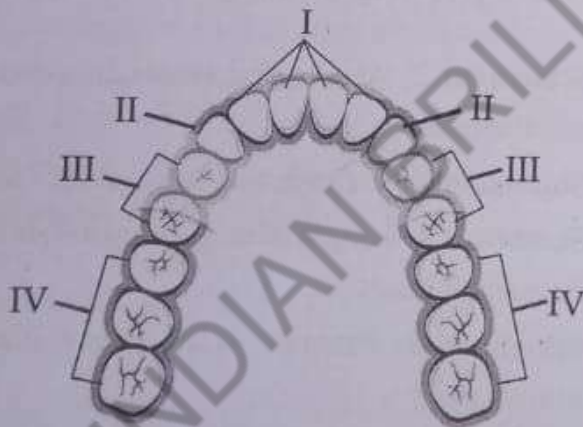
33. The diagram below shows a food web.



Which three organisms in the food web are competing for the same food resource?

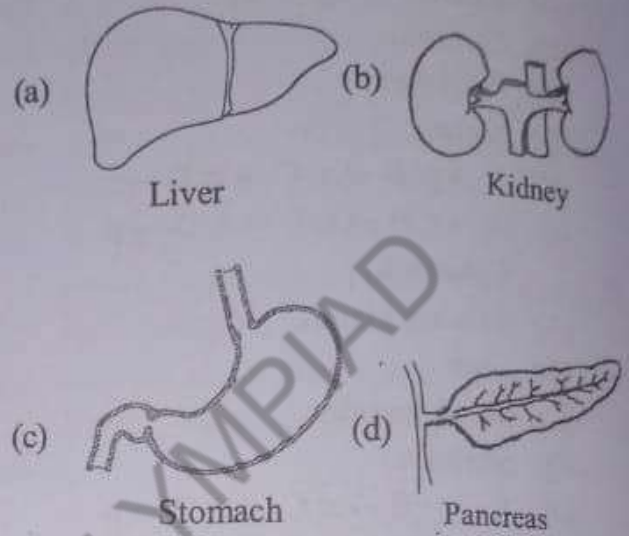
- (a) carrot, rabbit, and fox
- (b) grain, bird, and owl
- (c) fox, owl, and rabbit
- (d) bird, mouse, and grasshopper

**DIRECTIONS:** Look at the below diagram and answer the given questions.

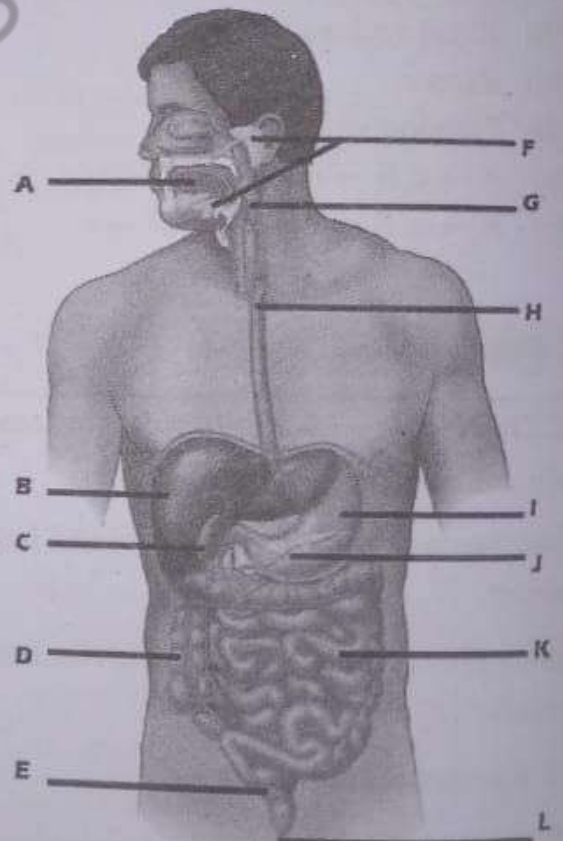


- 34. The teeth marked II represent
  - (a) canines
  - (b) incisors
  - (c) premolars
  - (d) molars
- 35. Teeth used to grind food are marked as
  - (a) I
  - (b) II
  - (c) III
  - (d) IV
- 36. Teeth marked III are also called
  - (a) tearing teeth
  - (b) canines
  - (c) molars
  - (d) crocking teeth

- 37. Teeth marked as I are
  - (a) molars
  - (b) premolars
  - (c) incisors
  - (d) Canines
- 38. Which one of the following diagram does not manufacture digestive juices?

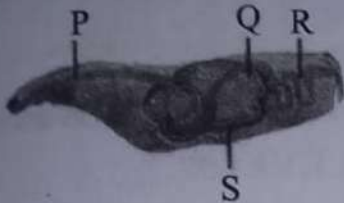


**DIRECTIONS:** Look at the below picture and answer the given questions.



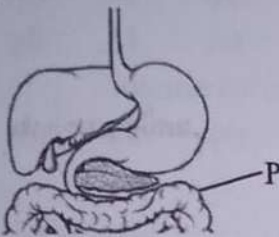
- 39. Which letter is pointing to the large intestine (colon)?
  - (a) K
  - (b) D
  - (c) L
  - (d) E
- 40. What is structure I?
  - (a) Liver
  - (b) Pancreas
  - (c) Stomach
  - (d) Kidney
- 41. What is structure C?
  - (a) Gall bladder
  - (b) Liver
  - (c) Stomach
  - (d) Heart

42. Which of the following labelled parts stores cud in ruminants?



- (a) P (b) Q  
(c) R (d) S

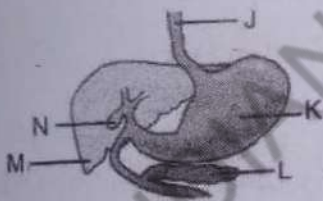
43. The given figure shows a part of human digestive system.



Which of the following represent 'P' in the given figure?

- (a) Pancreas (b) Liver  
(c) Gall bladder (d) Duodenum

44. The figure given below shows a part of the human alimentary canal.



Which of the two labelled structures produce substances involved in the conversion of fats into fatty acids and glycerol?

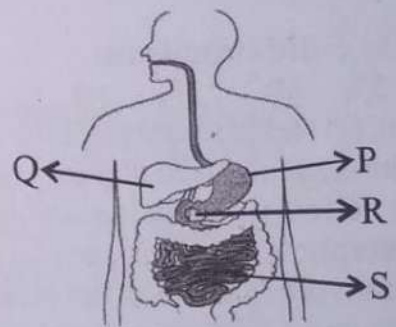
- (a) J and K (b) J and N  
(c) K and L (d) L and M

45. Which statement about the large intestine is false?



- (a) No absorption of materials takes place in the given organ.  
(b) First part of the given organ is called colon.  
(c) The length of the given organ is 1.5 metres.  
(d) It secretes mucus.

46. The given figure illustrates the human digestive system. Which labelled part of the human digestive system stores bile juice?



- (a) P (b) Q  
(c) R (d) S

## LEVEL 2

### Multiple Choice Questions

1. (c) 2. (c) 3. (b) 4. (c)  
5. (b) 6. (a) 7. (b) 8. (d)  
9. (c) 10. (d) 11. (a) 12. (b)  
13. (c) 14. (a) 15. (b) 16. (b)  
17. (b) It is called rumen.  
18. (c) 19. (b) 20. (d) 21. (b)  
22. (c) 23. (c)  
24. (c) When food is not accepted by our stomach  
it is vomited out.  
25. (c)

### Match the Column

26. (c) 27. (a) 28. (b)

### Statement Based Questions

29. (b) 30. (c)  
31. (d) Liver is the largest gland.  
32. (iii) (c)

### Figure Based Questions

33. (d) Bird, mouse and grasshopper all three are  
competing for grains.  
34. (a) 35. (d) 36. (d) 37. (c)  
38. (b) 39. (d) 40. (c) 41. (a)  
42. (b) In the given figure Q represents rumen.  
Rumen stores food that is partially digested.  
43. (a) In the given figure P represents pancreas.  
44. (d) In the given figure L represents pancreas  
and M represents liver. Fats get digested  
by the enzymes produced by pancreas  
(lipase) and bile juice produced by liver.  
45. (a) The given figure is of the Large intestine.  
Large intestine absorbs water from the  
undigested food material.  
46. (b) In the given figure Q represents liver. Liver  
secretes bile juice.